



Coulee Development Inc., N15526 Delaney Rd
Trempealeau, WI 54661

Toll Free 877-2BUY-CDI
(1-877-228-9234)

sales@couleedevelopment.com



“The River Pine”

Main Floor Plan

1421 Sq. Ft. Second Level 578 Sq. Ft.

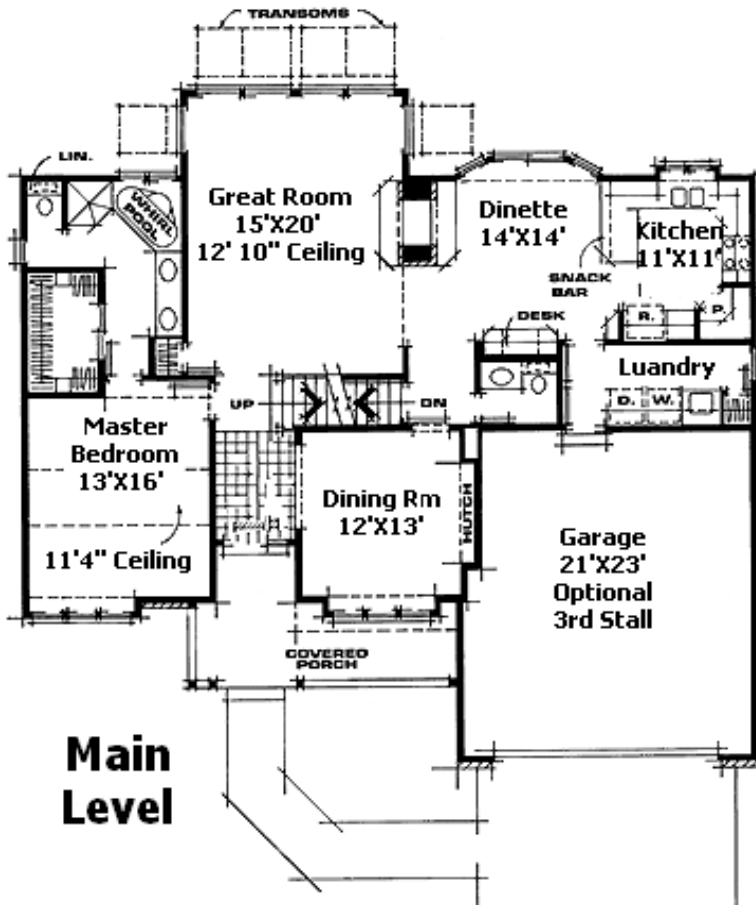
1999 Sq. Ft Finished by CDI

3420 Square Ft. W/Full Unfinished Basement

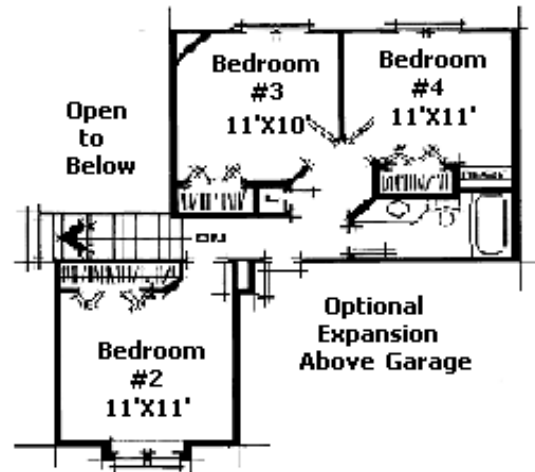
(Egress or walkout Dependent on Lot)

52' X47'

This 2 story house is perfect for the growing family. Affordably priced starting at \$199,900 on your lot this houses offer all the comforts of a quality home, at a price range you can afford. With features like hardwood floors, ceramic tile baths and a full basement with roughed in 3rd bath that can be finished to suite or completed later, this is the type of home that you can really build equity and a future in. Plus CDI can now assist you with financing, so give us a call today and let us show you what your future could look like with a quality home built by CDI. This is a sample floor plan, but CDI can build to suite, so call today let CDI “Build Your Future Today”! Priced on your lot, CDI also has several [New Housing Developments](#) to choose from. Additional charges, permits, city sewer, septic, well, ect. may apply in your area, please contact a CDI [“Home Team”](#) member today to see what your future could look like with a quality home built by CDI. 1-877-2BUY-CDI, That's 1-877-228-9234.



Main Level



Second Floor